



Let **UK** Home

2 Bedrooms

Flat

Located in London

£5,500 Per Month



info@letukhome.co.uk

<https://www.letukhome.co.uk/>

01795 358 886



25-37 Parker Street London

WC2B 5AN



Let UK Home are excited to offer this stunning 2-bedroom apartment in Chapter House located in the heart of Covent Garden, London's most celebrated cultural neighbourhood.

This property comprises a large bright open plan kitchen and living room leading to a large private terrace with great views, two double bedrooms with wardrobes, a large family sized bathroom and ample storage.

Residents of Chapter House will enjoy access to a range of exclusive amenities, including a concierge service, intimate gym and training studio, residents lobby, and beautiful courtyards.

The property is within walking distance of multiple top-tier universities, such as LSE, London Film School, University of the Arts London, King's College London, the University of London and the University of Westminster.

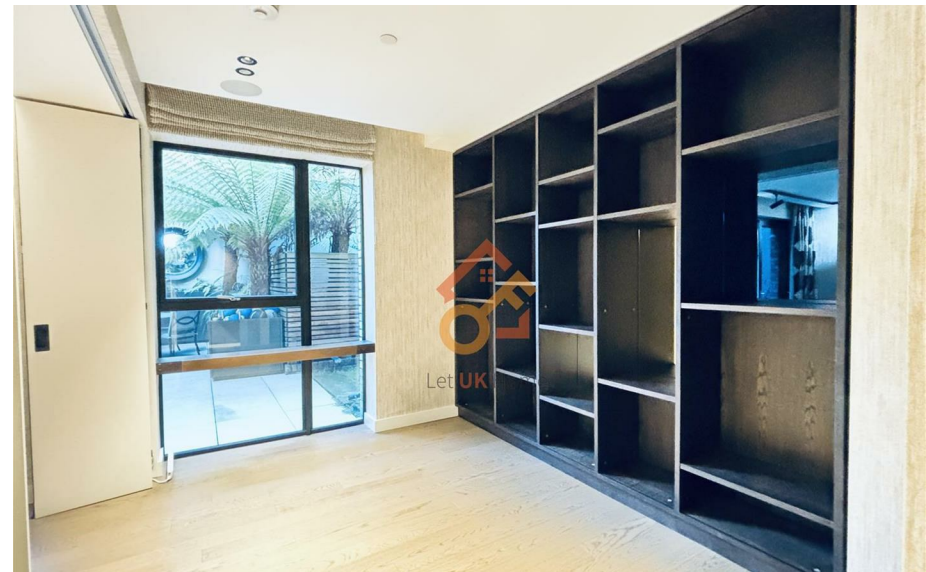
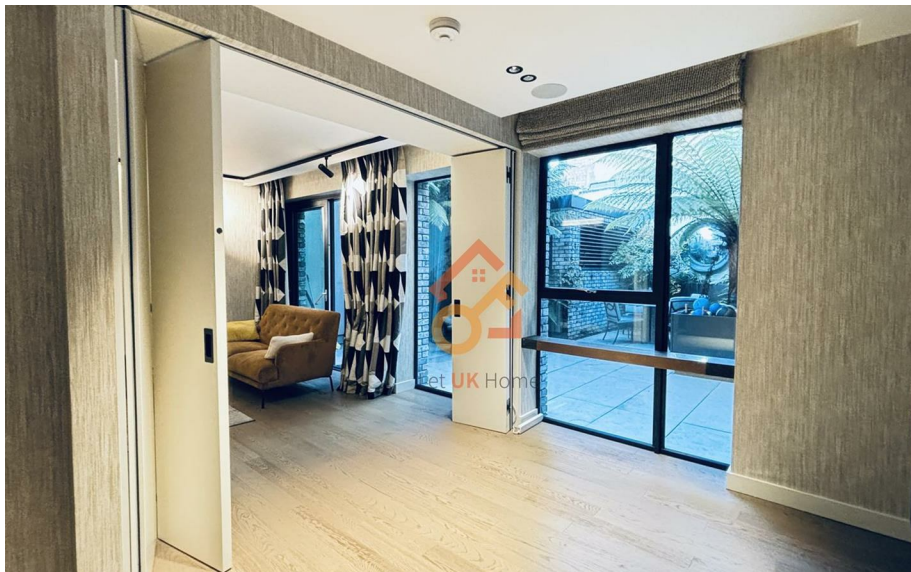
Boasting exceptional transport connectivity, four major tube stations — Holborn, Covent Garden, Leicester Square and Tottenham Court Road — are all on the doorstep. Fast transport links reach King's Cross St Pancras, the City, Bond Street and Liverpool Street, with London Chinatown also accessible on foot.

The surrounding area offers abundant daily amenities. Multiple Sainsbury's and Tesco Express stores, alongside Oseyo Korean supermarket and Chinatown's dining options, fully cater to daily shopping and lifestyle needs. The neighbourhood is home to a wide selection of high-street and luxury brands, plus diverse

25-37 Parker Street London

£5,500 Per Month

- Ground Floor
- 24h Security
- Residents Lounge
- EPC Rating: B
- Concierge Service
- The Gym
- Private Terrace





Let **UK** Home

3F 2 Eastbourne Terrace
 Paddington
 London
 W2 6LG

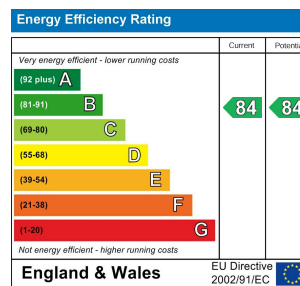
01795 358 886

info@letukhome.co.uk

Council Tax Band: G

Local Authority:

Agents Note: Whilst every care has been taken to prepare these particulars, they are for guidance purposes only. All measurements are approximate and are for general guidance purposes only and whilst every care has been taken to ensure their accuracy, they should not be relied upon and potential buyers/tenants are advised to recheck the measurements.



<https://www.letukhome.co.uk/>